

Pneumafil Twist Lock Cartridges

“Up and Over” Twist Lock cartridges for improved performance in challenging environments

Description

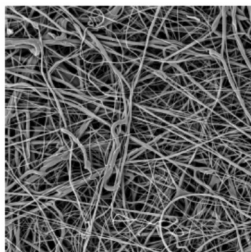
Pneumafil Pneuma-Pulse filter cartridges are specially designed for pulse type gas turbine air inlet systems designed by Pneumafil. The twist lock feature allows installation of the cartridge into the system without tools. A simple twisting motion provides proper compression of the gasket and locks the unit in place.

Does your system deal with period of high humidity or moisture? Improve airflow and reduce air restriction with our high efficiency Synthetic MERV 12 or MERV 16 rated filters.



Construction

- The pleated media pack is supported by cylindrical inner and outer cores of flattened expanded galvanized or stainless steel.
- Pleats are stabilized by bonding the media to cores with a spiral of hot-melt adhesive on both inner and outer cores.
- Media and cores are bonded to the end caps with either polyurethane, epoxy, or plastisol sealant.
- A seamless polyisoprene sponge rubber gasket is bonded to the end cap of each cartridge.
- Available in all galvanized or stainless steel.



Matrex media shown at 500X magnification.

Standard Synthetic Media Performance Data

Rate Flow	2.65 fpm
Clean Resistance	0.606(inches of w.g.)
ASRAE 52.1	97.2 % (avg dust spot)
ASHRAE 52.2	MERV 12
Dust Holding (SAE)	10.8 g/Ft ²

Synthetic **MATREX** Media Performance Data

Rate Flow Per Set	3.16 fpm
Clean Resistance	0.692 (inches of w.g.)
ASRAE 52.1	98 % (avg dust spot)
ASHRAE 52.2	MERV 16
Dust Holding (SAE)	11.3 g/Ft ²

Part No.	Media	Construction
S52282C2	Plain Synthetic	34” Twist Lock
S52415C1	Synthetic MATREX	34” Twist Lock