

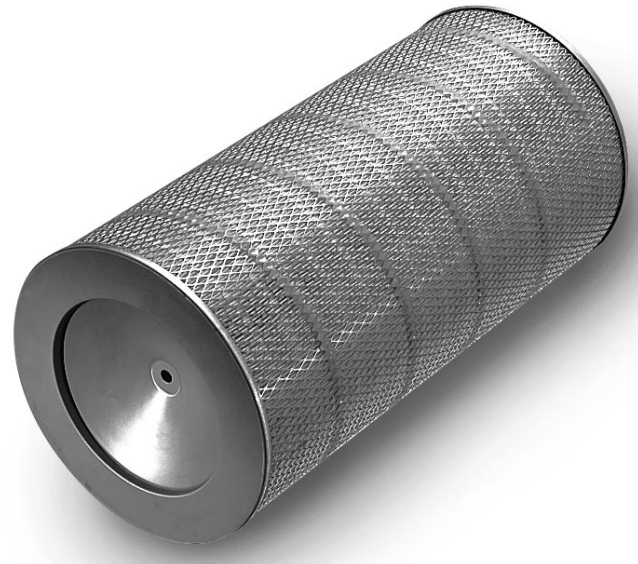
TTD Style Cartridges

Pneuma-Pulse “TTD” cartridges for improved performance in challenging environments

For over 40 years Pneumafil has provided the highest quality and best performing inlet filtration systems available in the industry. We have supplied our original equipment to all major inlet Gas Turbine suppliers including: GE, Siemens, Alstom, Mitsubishi, Rolls Royce, Pratt & Whitney and others.

The Pneuma-Pulse filter cartridge is available in several choice of media to fit all types of operating conditions. Their robust construction make them ideal for long term use in pulse style TTD filter housing systems supplied by **Donaldson, American Air Filter or Farr**. Each are individually boxed or “bulk packaged” to suit your change out project requirements.

Filters in vertical mount style arrangements can be extended in length for lower pressure drop and greater capacity. Filter wraps can be shipped separately or factory installed .



Construction Details

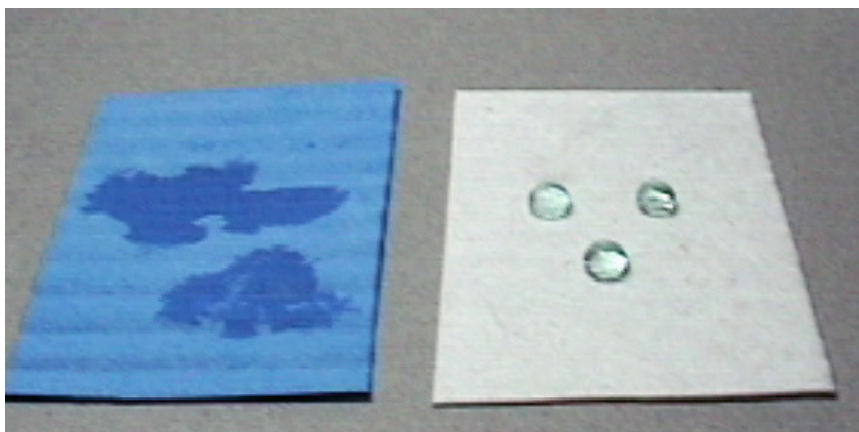
- Diameters: 12.75"
- Lengths: 22", 26", 34.5", 36"
- Galvanized metal surfaces
- One piece seamless gaskets
- 20" Burst rating
- Solid urethane potting compounds
- Spiral glue bead adhesive
- Pleat separation

Accessories/Service

- TTD Crank Arms for 22", 26" and 36" length filters
- Pre-filter wraps
- Failed filter/performance analysis
- Housing / field labor repair services

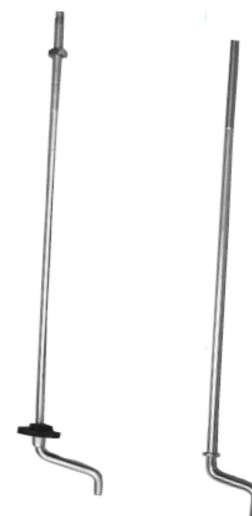


TTD Style Cartridges



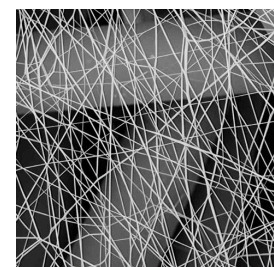
Pre-Filter

Synthetic PneuMAX Nano Filters™ are designed for self-cleaning pulse filter house systems and have 3X the media strength when compared to wet laid paper. Media surface is hydrophobic and will repel water.



Crank Arms

Pneumafil Part No.	Description—with All G60 Galvanized metal components
S52554C1	MERV 11 Filter, 12.75" x 22", Open/Closed, Cellulose media
S52554C2	MERV 12 Filter, 12.75" x 22", Open/Closed, Blended Media
S52554C4	MERV 12 Filter, 12.75" x 22", Open/Closed, 100% Synthetic
A43422C1	MERV 11 Filter, 12.75" x 26", Open/Closed, Cellulose media
A43410C1	MERV 12 Filter, 12.75" x 26", Open/Closed, Blended Media
A45322C1	MERV 14 Filter, 12.75" x 26", Open/Closed Blended Nano (190 Ft ²)
A45311C1	MERV 14 Filter, 12.75" x 26", Open/Closed Blended Nano (226 Ft ²)
A43432C1	MERV 12 Filter, 12.75" x 26", Open/Closed 100% Synthetic
A45409C1	MERV 15, Filter, 12.75" x 26", Open/Closed PneuMAX Synthetic Nano (Pulse)
S52675C1	MERV 16, Filter, 12.75" x 26", Open/Closed PneuMax Synthetic (non-pulse)



PneuMax has thermally fused nano fibers to assure top efficiency and turbine protection