

## PneuMAX Synthetic F9 Nano Pulse Filters

### Unmatched “Self-Cleaning” Performance

#### Description

PneuMAX Synthetic F9 filters utilize thermally bonded Nano fibers that are exclusively designed for maximum performance in continuous self-cleaning style pulse jet filter house applications. PneuMAX is naturally *hydrophobic* and designed for pulse cleaning in challenging atmospheric conditions including:

- Extreme Dust Concentrations
- Rain/Fog
- Snow/Ice
- Hoar Frost

#### Lowest Operating Pressure Drop

- True surface loaded synthetic filter pulse tested while delivering the holding capacity of over 90,000 grains of dust.
- Pleat separation design stabilizes pleats during the dust loading/ discharging phases resulting in lowest dynamic restriction of airflow.

#### Enduring High Filtration Efficiency

- Fully discharged, 100% mechanical fiber dust separation filter assures efficiency is maintained throughout filter lifetime even after repeated pulses.
- Patented bi-component thermally fused nano fiber film offers maximum consistency and durability of the filtration surface.

#### Construction

- PneuMAX media has 3X the burst strength of all leading wet laid paper filters.
- Glue bead pleat separators
- Inner/outer cores of expanded G60 galvanized or stainless steel.
- Media is bonded to cores with highly durable hot-melt adhesive and bonded to the end caps with a two part polyurethane sealant.
- A seamless rubber gaskets
- Filter set includes embossed end cap “Filter stop” on conical filter to provide a safety stop for proper gasket compression.

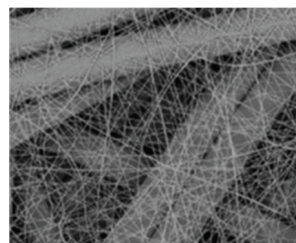


#### PneuMAX Synthetic Nano Filter Performance Data

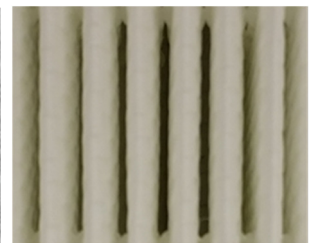
Rate Flow Per Set	1630 CFM
Clean Resistance	0.92 (inches of w.g.)
EN779-2012	F9
ASHRAE 52.2-2012	MERV 15
Average Efficiency @ 0.4 Micrometers	80%

#### Latest Nano Technology Development

- Nano fibers provide 100% mechanical separation
  - 74.4% Fully Discharged
- Unique fiber structure offers optimum dust shedding for pulse style filter houses



Nano Fiber Layer



Glue Bead Separators

## PneuMAX Synthetic F9 Nano Pulse Filters

### Unmatched “Self-Cleaning” Performance

Cylindrical	OD 12.75” (325 mm) x L 26” (660 mm)
Conical	OD 12.75” (325 mm) x 17.5” (445 mm), x L 26 (660 mm)

Pneumafil Part Number	Donaldson Part Number	Construction—Synthetic Media
A45465C1	n/a	Cylindrical, G60 Galvanized Components, 0.54” bolt hole
A45466C1	n/a	Conical, G60 Galvanized Components
A45409C12	P03-0283	Cylindrical, G90 Caps & outer core, 0.54” bolt hole,
A45410C12	P03-0282	Conical, G90 Caps & outer core,
A45409C1	P19-1177	Cylindrical, G60 Galvanized Components, 1.18” bolt hole
A45410C1	P19-1178	Conical, G60 Galvanized Components
A45409C12	P03-0283	Cylindrical, G90 Caps & outer core, 1.18” bolt hole,
A45410C12	P03-0282	Conical, G90 Caps & outer core,

Pneumafil Part Number	Donaldson Part Number	Construction-Blended Cellulose Media
A45322C1	P19-1280	Cylindrical, galvanized - open/closed 1.18” bolt hole, MERV 14
A45323C1	P19-1281	Conical, galvanized - open/open, MERV 14

### Pre-Filter Options for Static Operation

#### Filter Sleeve

P/N: S52669A1

- Dimensions - 27.5” x 132”
- 100% synthetic coalescing filter sleeve, with Tackifier MERV 6

P/N: S52670A1

- Dimensions
- 100% synthetic coalescing filter sleeve, without Tackifier MERV 6

P/N: S43392C1

- Filter Wrap - with Velcro strip for cylindrical filter. MERV 7

P/N: S43688C1

- Filter Wrap - with Velcro strip for conical Filter. MERV 7



#### Filter Tool

P/N: S52725C1

- Pre-filter installation Tool
- Extendable arm



**PNEUMAFIL**  
**Nederman**

www.pneumafil.com  
gtinfo@pneumafil.com